



Operational Snapshot

03

Request for Clearance Received

06

Certificates of Clearance Issued

00

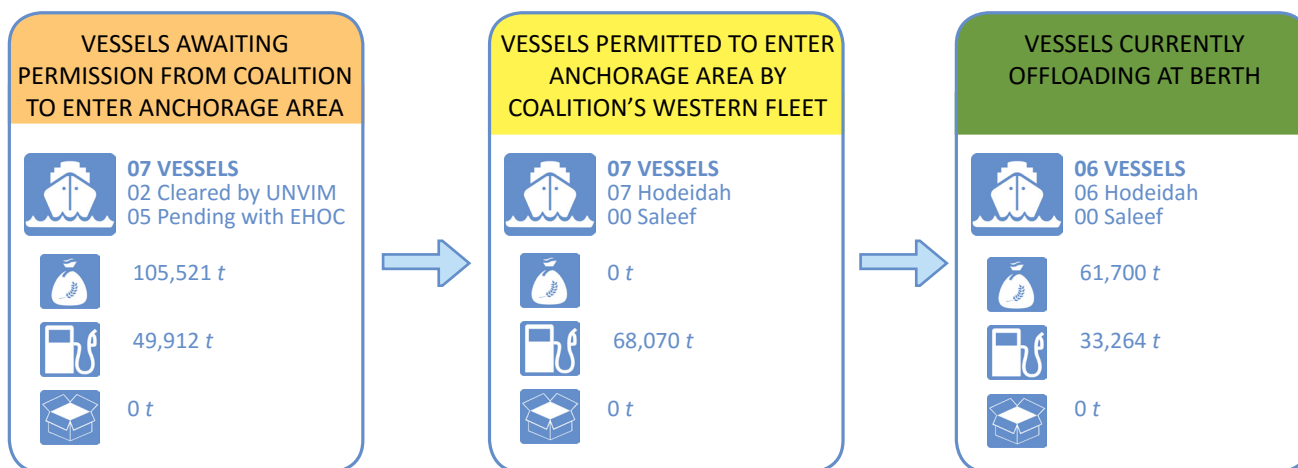
Vessels Inspected in International waters

01

Vessels Inspected in Territorial waters

36

Hours Average time to issue clearance



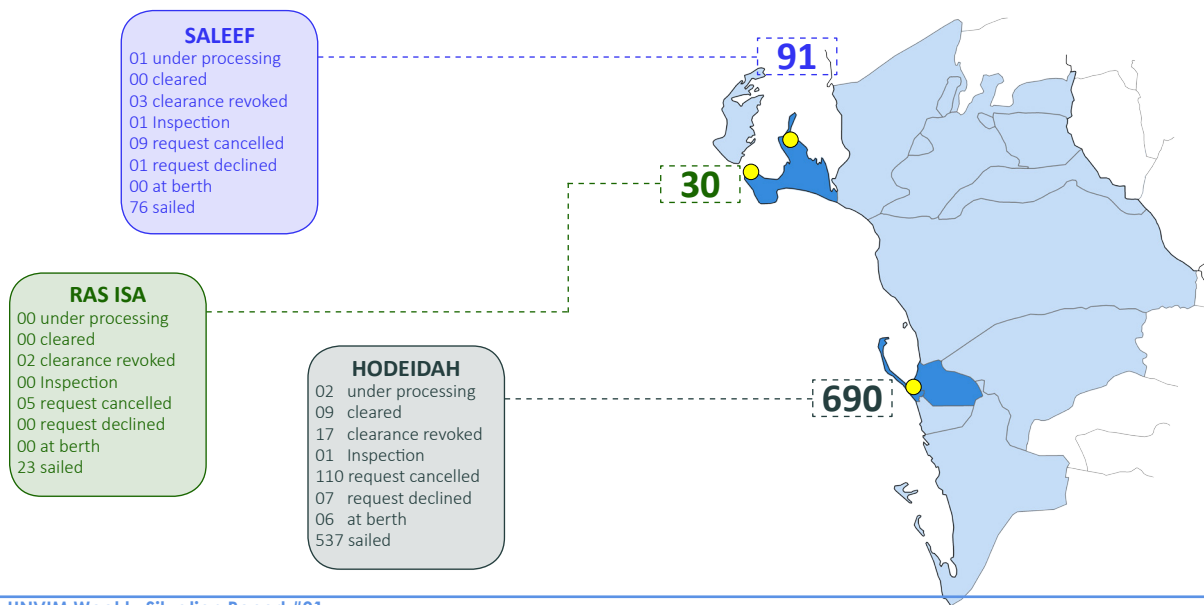
CANCELLED REQUESTS: 02 Diverted by Coalition to other ports, 00 Cancelled on Owners requests, 00 Declined by Coalition

TOTAL CARGO: 60,683 t

On Board 06 vessels cleared by UNVIM between 24 - 30 January 2018

87,650 t (Grain), 37,769 t (Fuel), 0 t (Containers)

810 CLEARANCE REQUESTS RECEIVED Since 5 May 2016



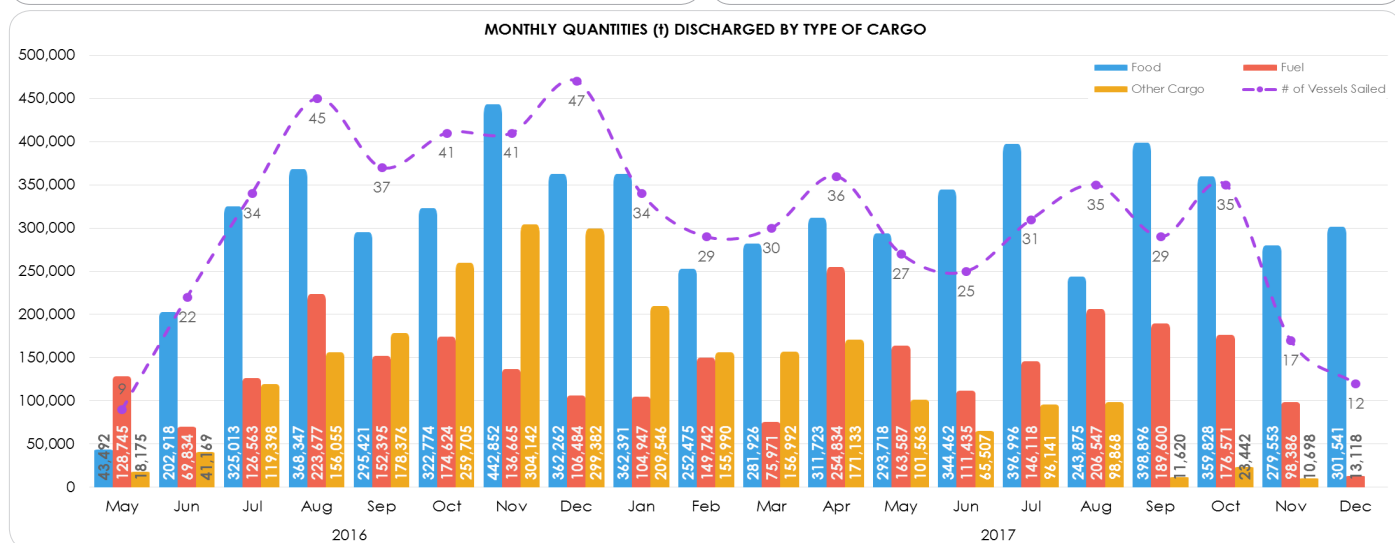
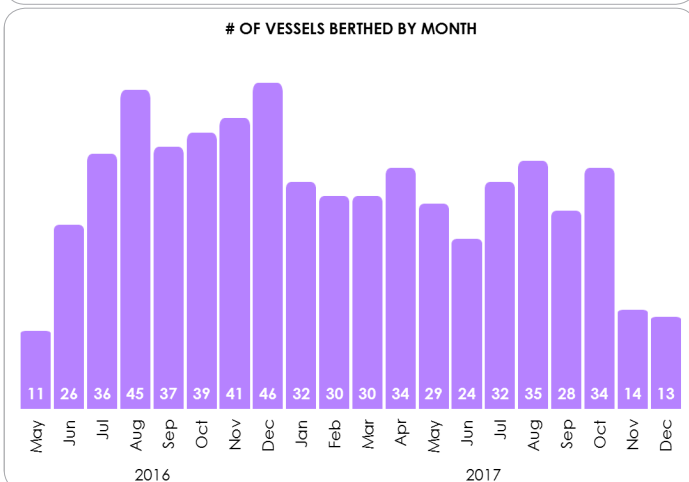
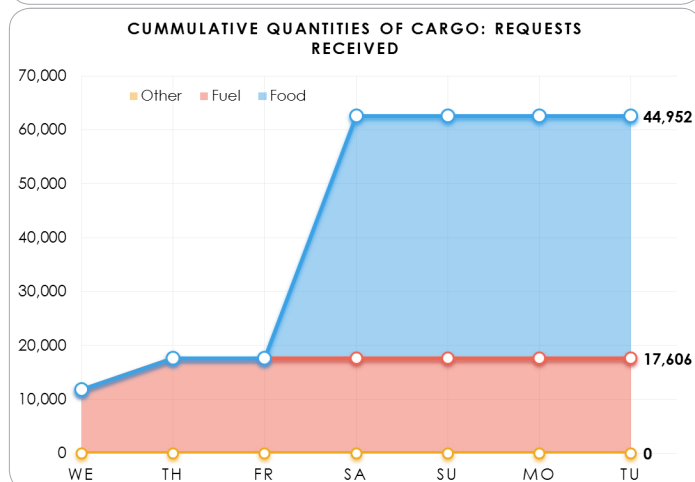
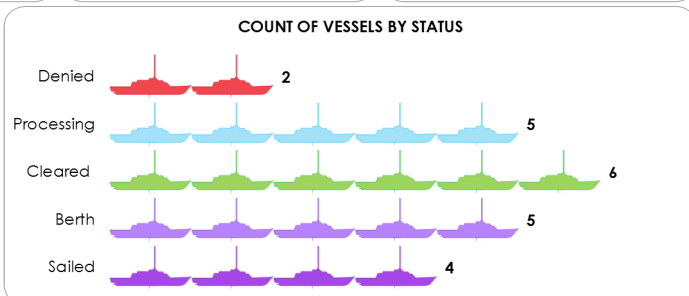
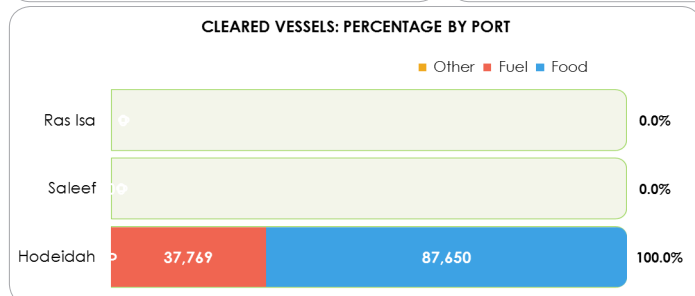
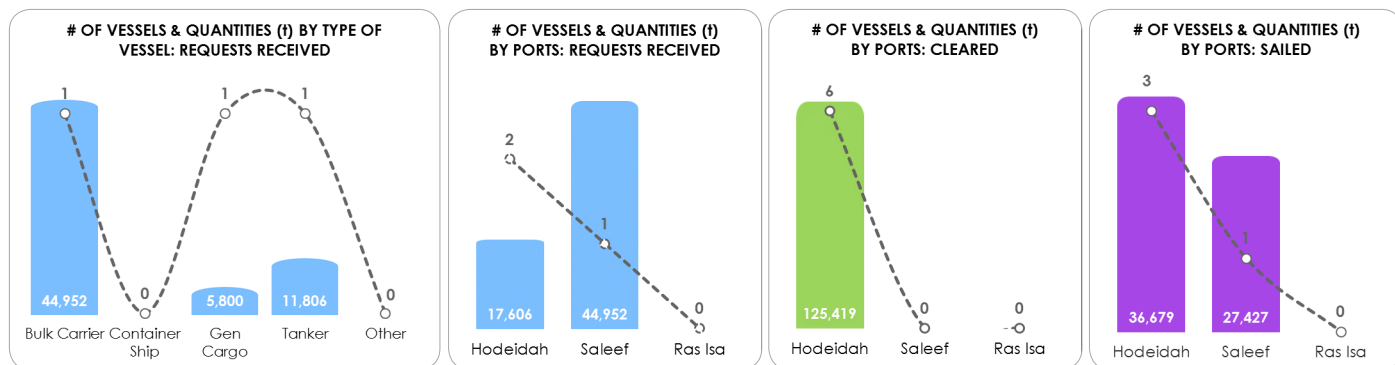


Weekly Situation Report #91

24 - 30 January 2018

6. UNVM Statistics

The charts below highlights the number of vessels received, type of vessels, status and quantity of cargo for the week. It also shows monthly trend of discharged cargo and vessels berthed.



Status Definitions

- Cleared - En Route:** Vessels which have been cleared but are currently sailing towards Yemen's Red Sea ports from their transshipment ports or ports of origin.
- Holding Area:** Vessels which have been cleared but are currently sailing towards Yemen's Red Sea ports from their transshipment ports or ports of origin.
- Anchorage Area:** The anchorage area represents an area controlled by local port authorities where vessels await their turn to berth after being authorised to do so by the port's control tower.
- Berthed:** The vessel has been authorised to proceed to the port's berth and is in the process of discharging its cargo.
- Sailed:** The vessel has berthed, discharged its cargo and sailed from the port.
- Clearance Revoked:** The clearance request is returned to the requestor for additional inputs.



Weekly Situation Report #91

24 - 30 January 2018

